



Postscript: Camp Robinson, 1875

(Article begins on page 2 below.)

This article is copyrighted by History Nebraska (formerly the Nebraska State Historical Society). You may download it for your personal use.

For permission to re-use materials, or for photo ordering information, see:

<https://history.nebraska.gov/publications/re-use-nshs-materials>

Learn more about *Nebraska History* (and search articles) here:

<https://history.nebraska.gov/publications/nebraska-history-magazine>

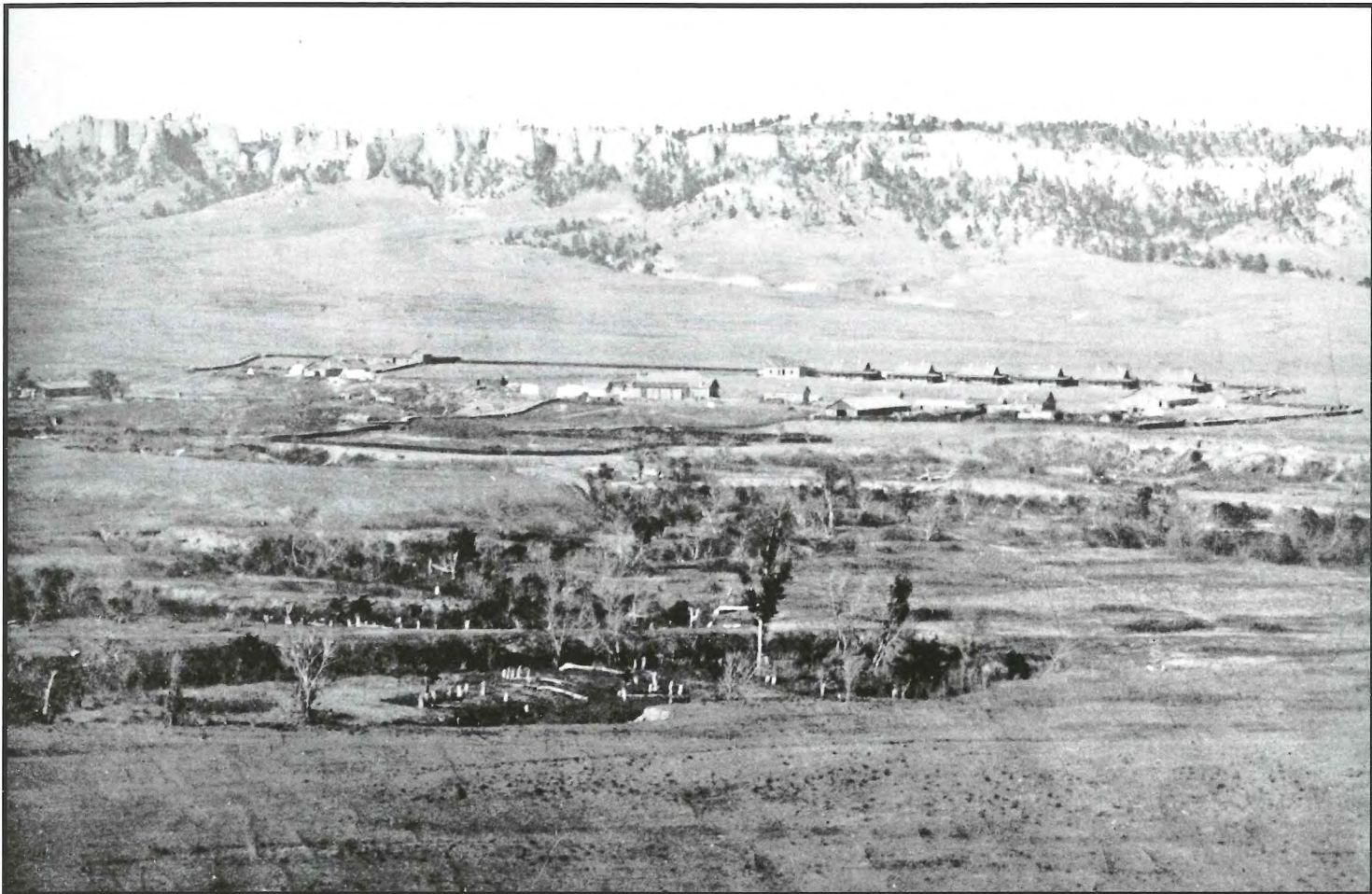
History Nebraska members receive four issues of *Nebraska History* annually:

<https://history.nebraska.gov/get-involved/membership>

Full Citation: “Postscript: Camp Robinson, 1875,” *Nebraska History* 95 (2014): 76

Cataloging Information:

Photographs / Images: Camp Robinson buildings surrounded by a barricade of cordwood to be used as fuel



NSHS RG1517-13-4

In this detail of the earliest known view of Camp Robinson, taken in 1875, the buildings are surrounded by a barricade of cordwood, an improvised fortification that would gradually disappear into the camp's stoves (see p. 20). The White River, dotted with tree stumps, meanders through the foreground.

Only part of this view is recognizable to present-day visitors to Fort Robinson State Park: the bluffs

to the north, obviously, and the six houses of the original officers' row, seen in the top right of the cordwood enclosure. The parade ground familiar to today's visitors was laid out in 1887 in the upper left part of this detail, across from where Highway 20 now divides the valley. 🏠