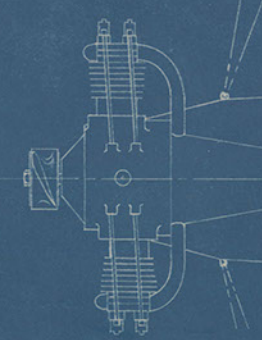


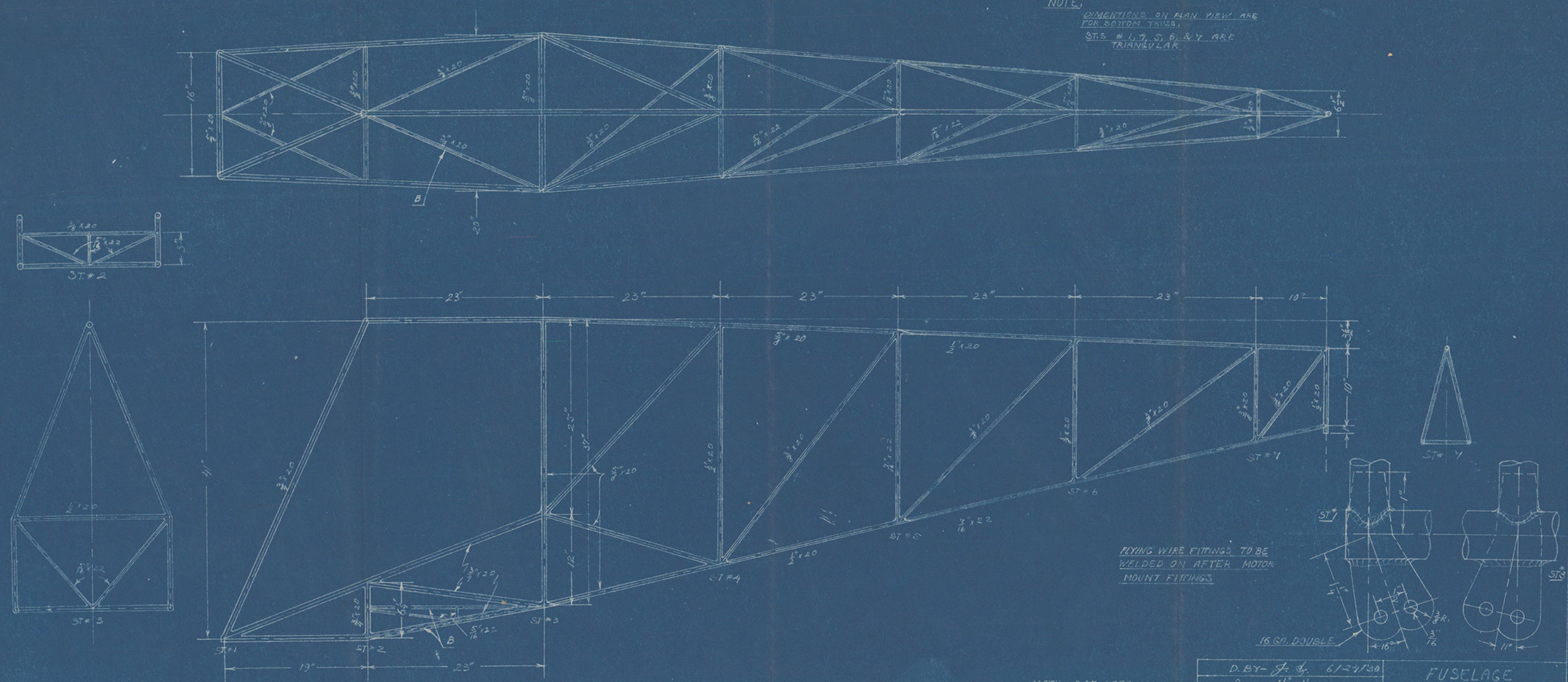
D. BY- <i>F. J. 4/22/30</i>	FRONT VIEW
Scale: $1/8"=1'$	"BABY LINCOLN" WITH
DRG # 2	"LINCOLN-ROCKET" ENGINE
LINCOLN, NEBRASKA	

2200 LB. CABLE
1800 LB. CABLE



D.B.Y. F. # 6/22/100	PLAN VIEW
Scale: 1/2" = 1'	"BABY LINCOLN" WITH
Des. # 3	"LINCOLN-ROCKET" ENGINE
LINCOLN, NEBRASKA	

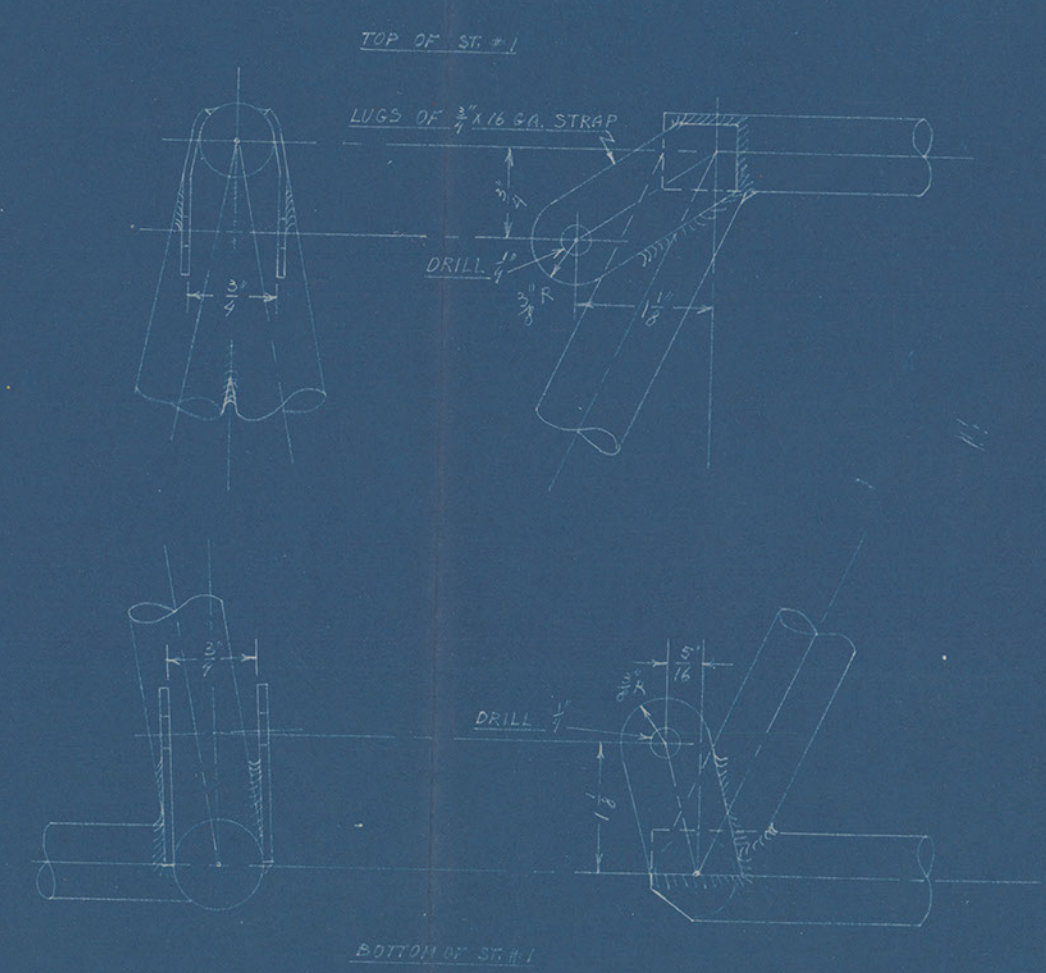
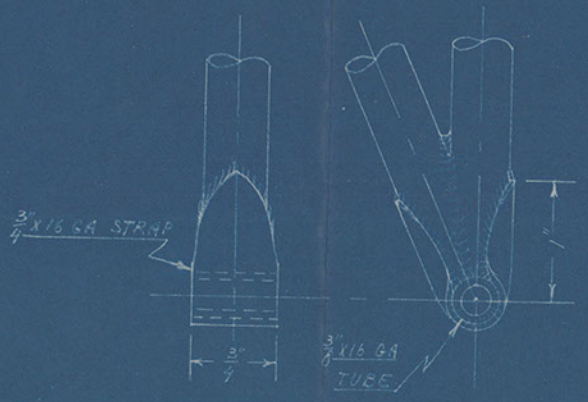
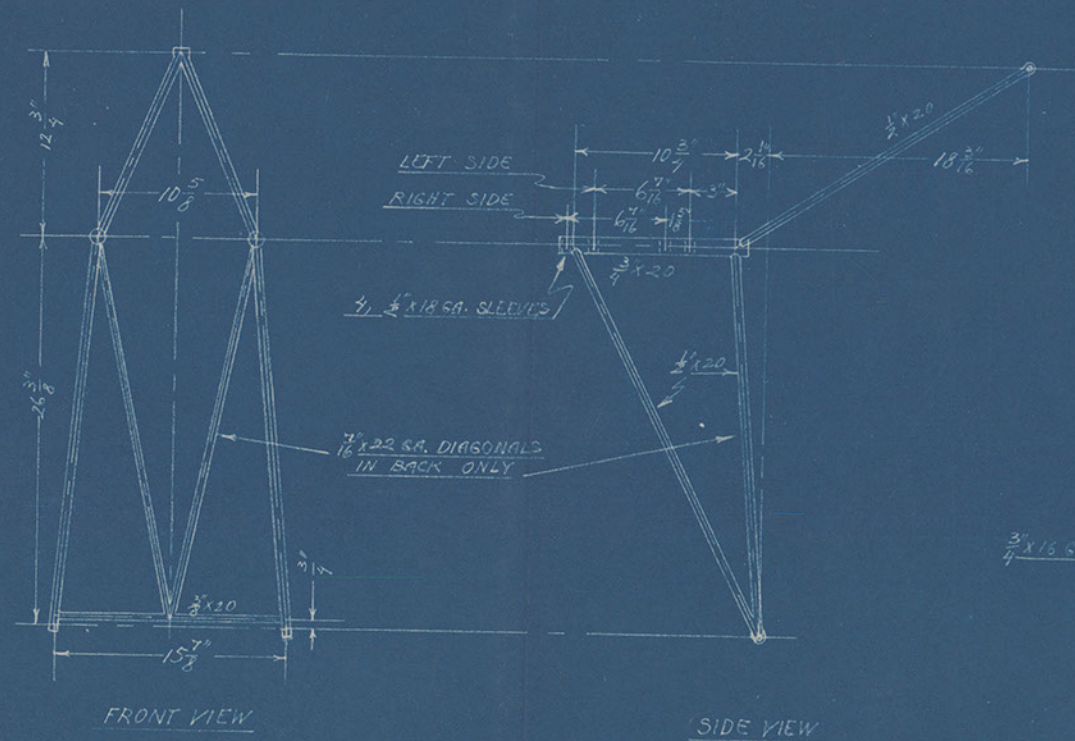
NOTE:
 DIMENSIONS ON PLAN VIEW ARE
 FOR BOTTOM TUBES.
 STS # 1, 4, 5, 6, & 7 ARE
 TRIANGULAR.



FLYING WIRE FITTINGS TO BE
 WELDED ON AFTER MOTOR
 MOUNT FITTINGS

MATL: SAE SPEC. 1025
 STEEL TUBING

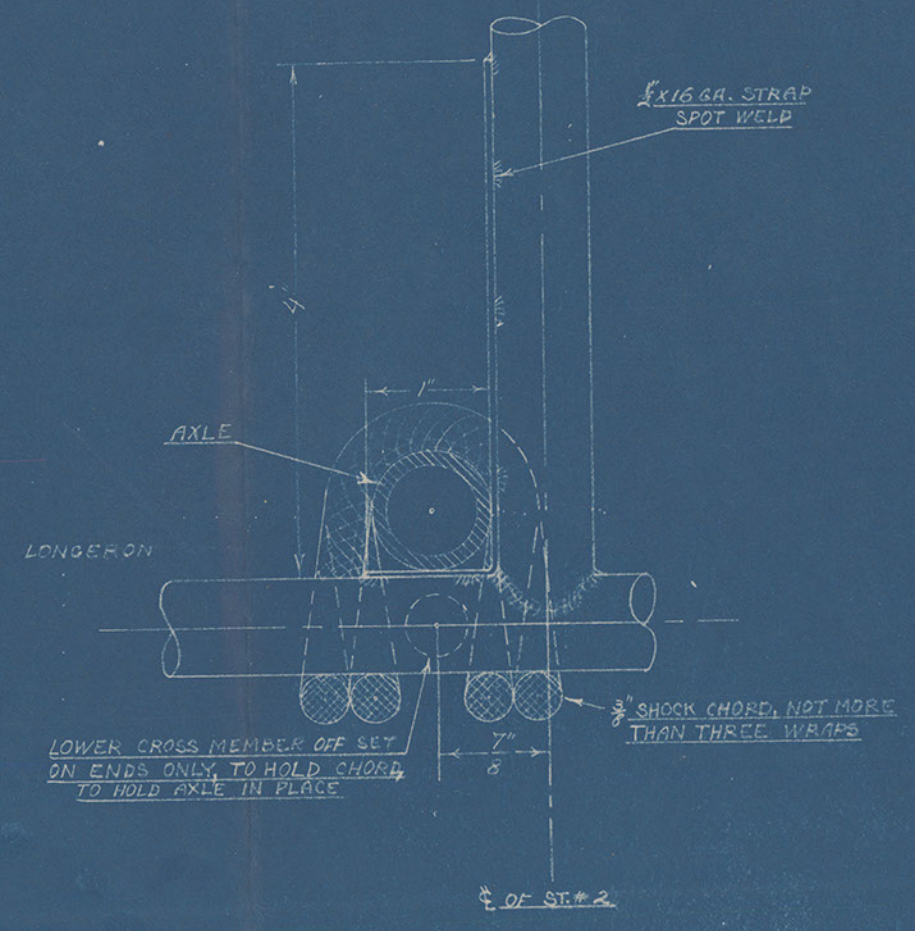
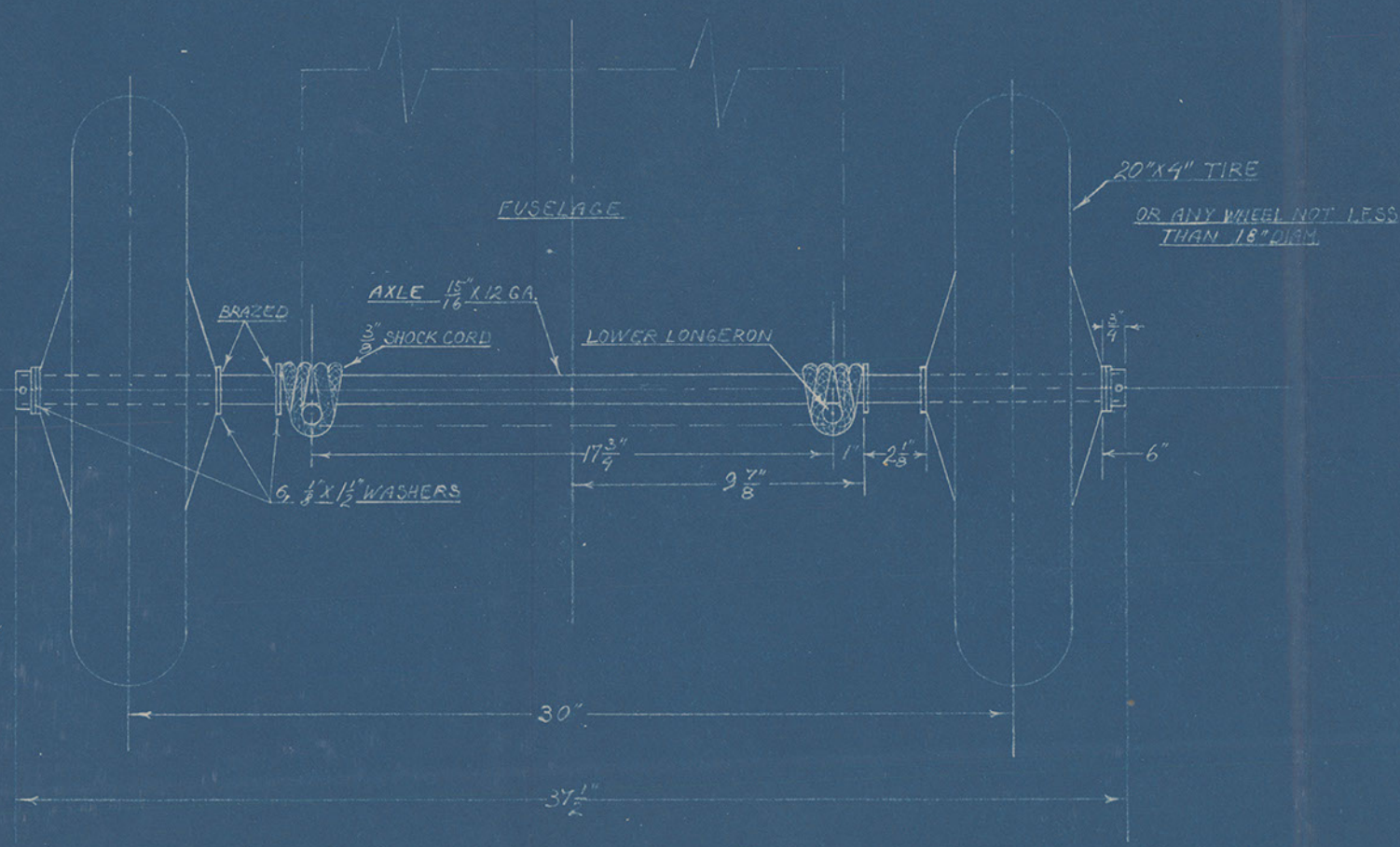
D. BY - J. G. 6/24/30	FUSELAGE
Scale: 1/2" = 1'	"BABY-LINCOLN" WITH
DRG. # 4	"LINCOLN-ROCKET" ENGINE
LINCOLN, NEBRASKA	



DETAIL OF MOTOR MOUNT ANCHORAGE TO FUSELAGE

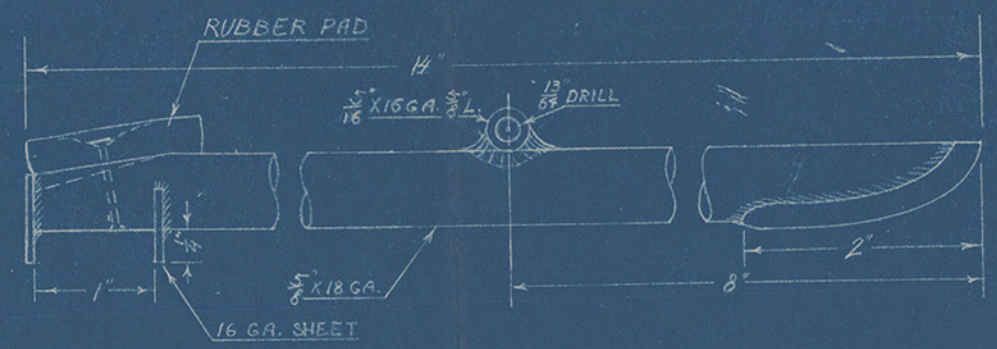
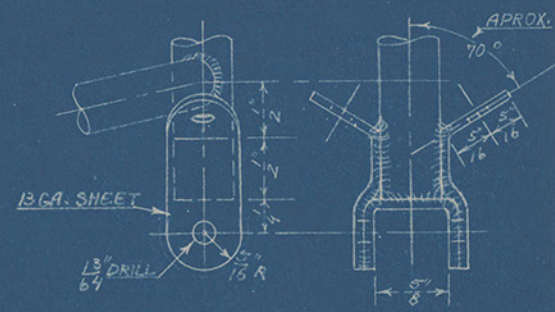
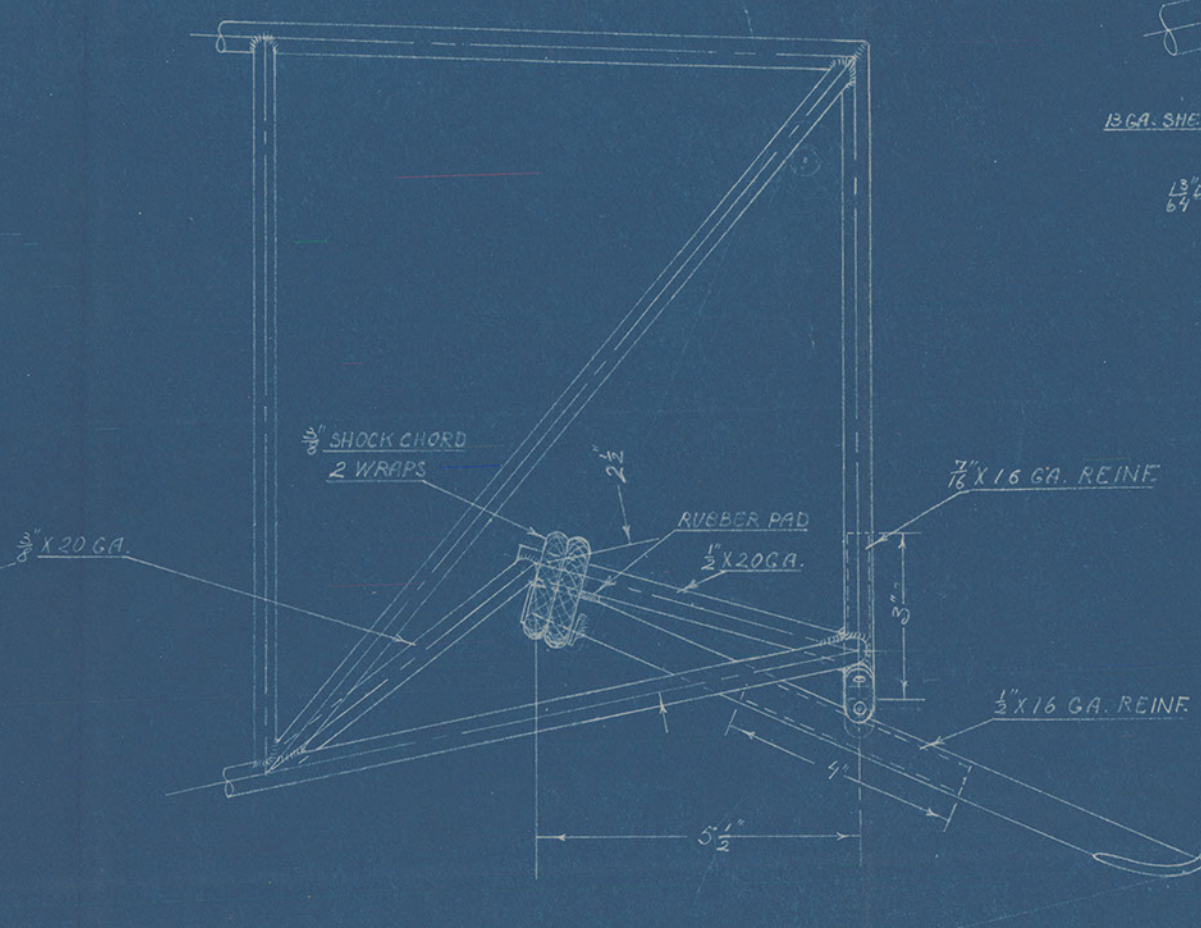
MATL. SAE. SPEC. 1025 STEEL

D. BY - <i>[Signature]</i> 6/29/50	MOTOR MOUNT "BABY LINCOLN" WITH "LINCOLN ROCKET" ENGINE
SCALE: $1\frac{1}{2}$ " = 1"	
DRG. # 5	
LINCOLN, NEBRASKA	



MATLI S.A.E. SPEC. 1025 STEEL

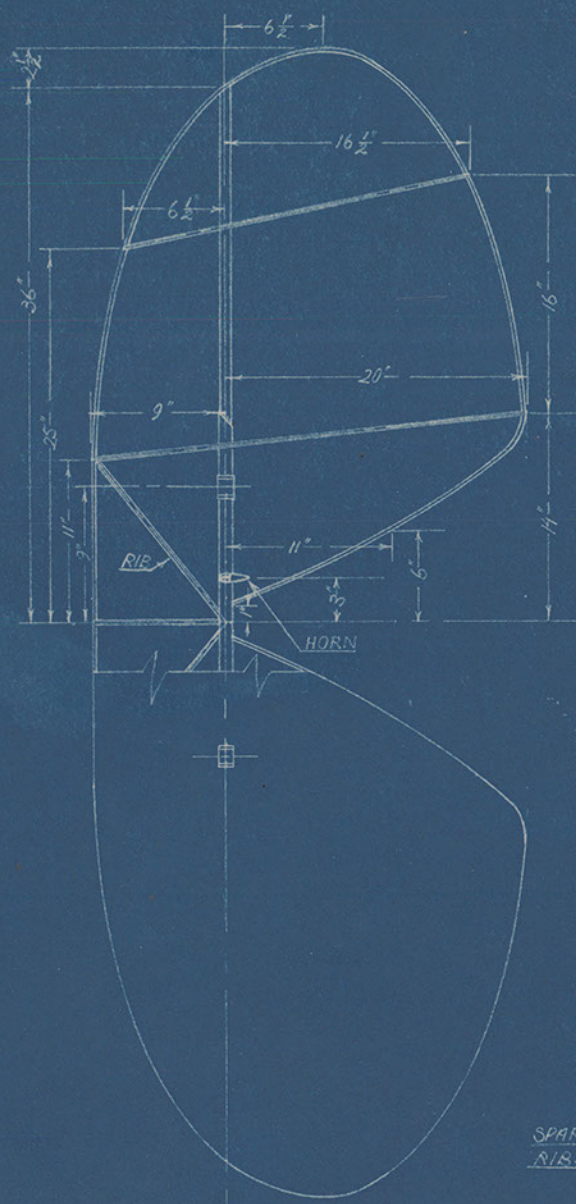
D. BY- <i>J. J.</i> 6/20/30	LANDING GEAR
SCALE: 3" = 1" & FULL	"BABY LINCOLN" WITH
DRG. # 6	"LINCOLN-ROCKET" ENGINE
LINCOLN, NEBRASKA	



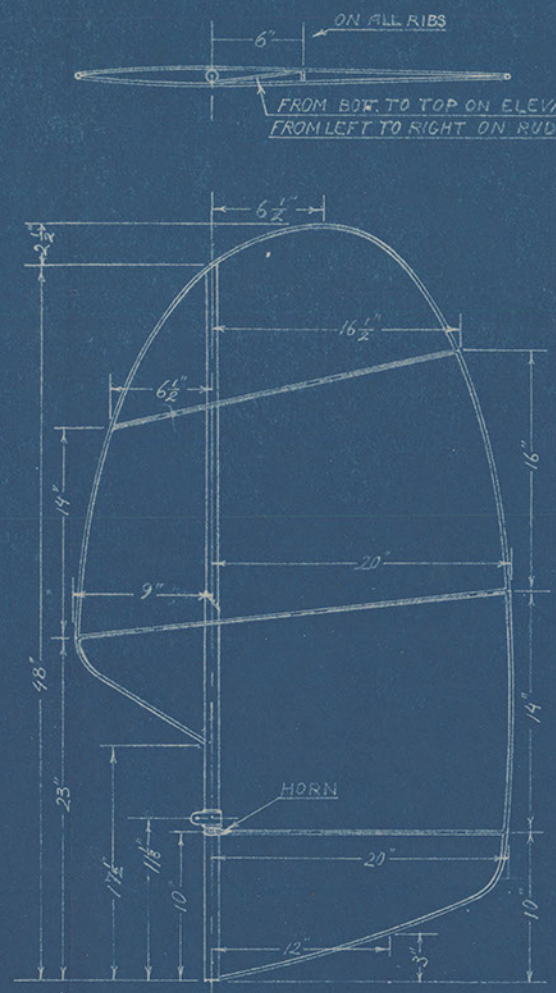
MAT'L: SAE SPEC. 1025 STEEL

D.B.Y. *Jr.* 6/29/30
 SCALE: HALF & FULL
 DRG. # Y
 LINCOLN, NEBRASKA

TAIL SKID
 "BABY LINCOLN" WITH
 "LINCOLN-ROCKET" ENGINE

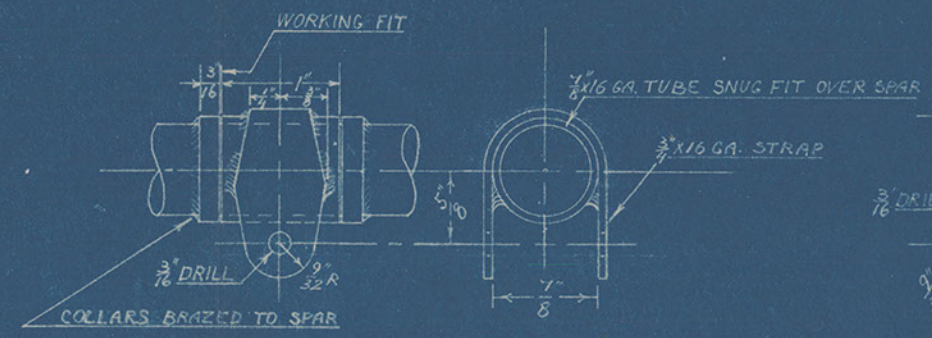
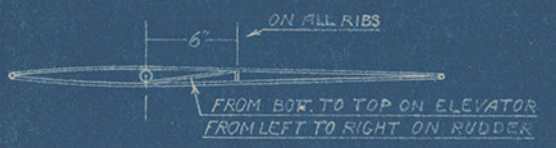


ELEVATOR

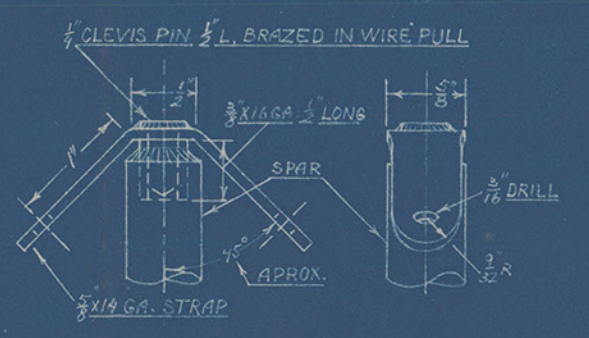


RUDDER

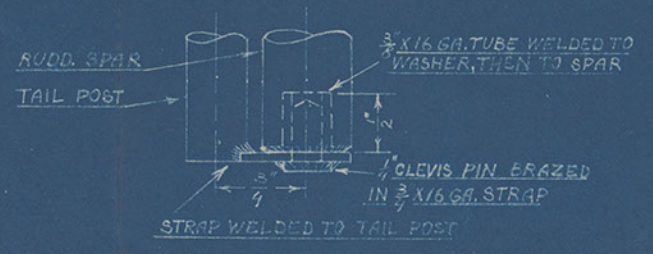
SPARS: $\frac{3}{8}$ " X 18, & $\frac{5}{8}$ " X 20 SPLICED AS SHOWN
 RIBS: $\frac{3}{8}$ " X 22, LEADING & TRAILING EDGE, $\frac{5}{8}$ " X 22



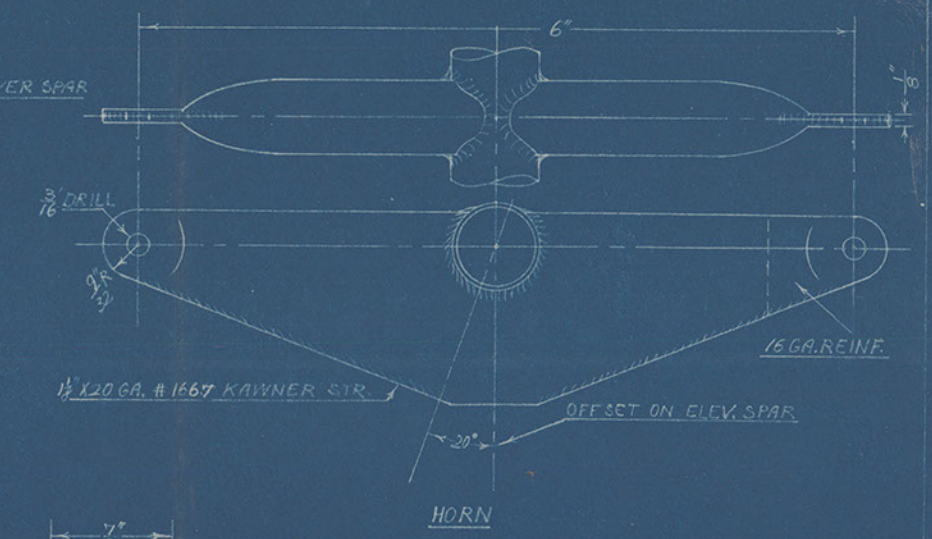
HINGE 3 REQ'D



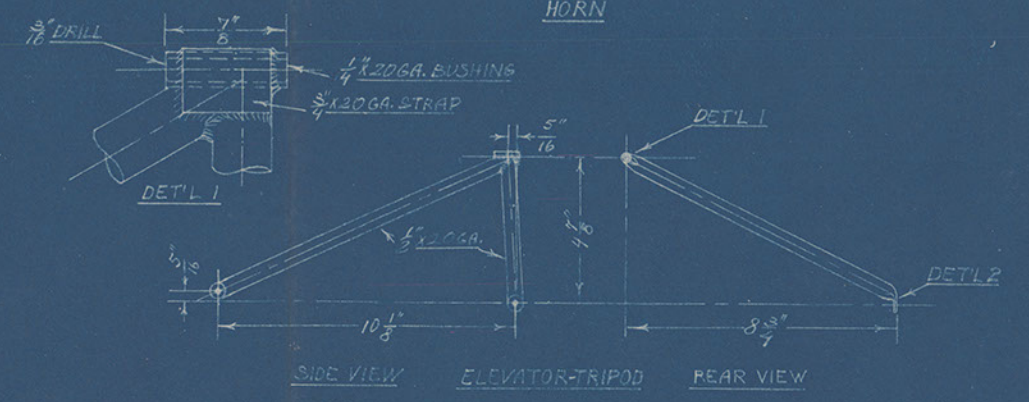
END HINGE 3 REQ'D



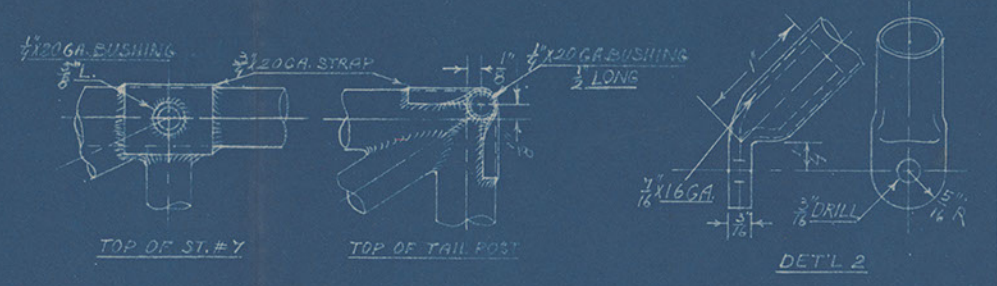
RUDDER HINGE BOTTOM



HORN



SIDE VIEW ELEVATOR-TRIPOD REAR VIEW



TOP OF ST. #7

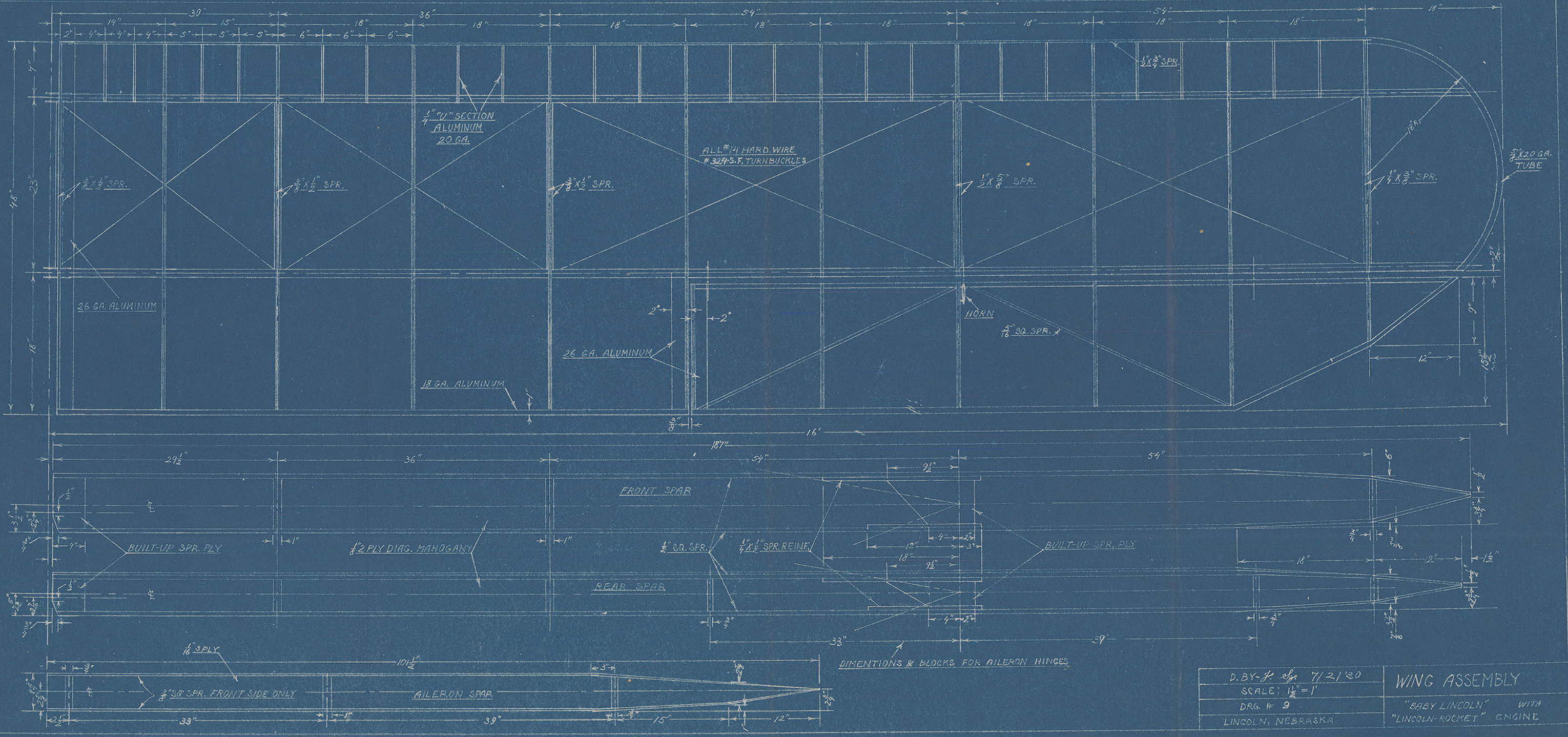
TOP OF TAIL POST

DET'L 2

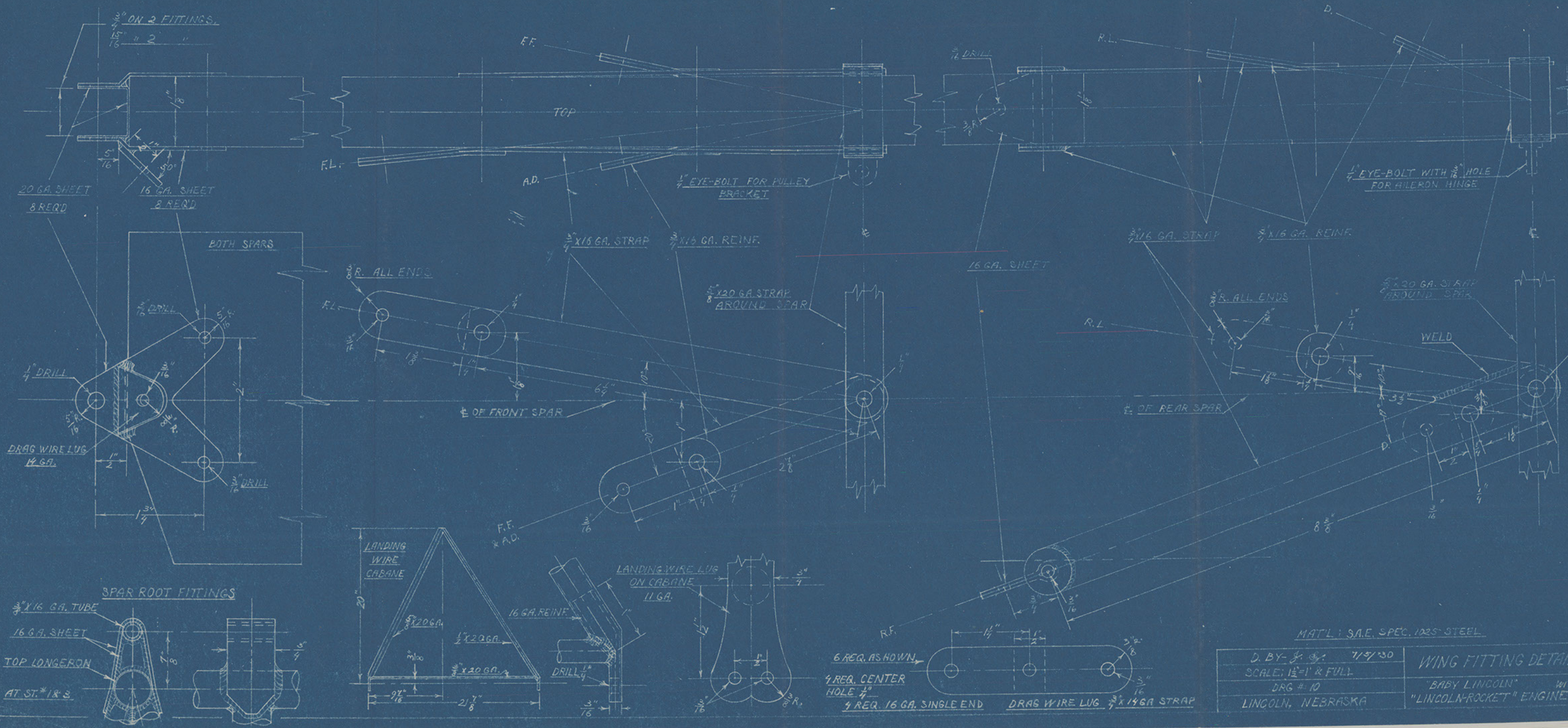
MAT'L: SAE SPEC. 1025 STEEL

D. BY: *[Signature]* 6/30/30
 SCALE: 1 1/2" = 1' & FULL
 DRG. # 5
 LINCOLN, NEBRASKA

TAIL UNIT
 "BABY LINCOLN" WITH
 "LINCOLN-ROCKET" ENGINE



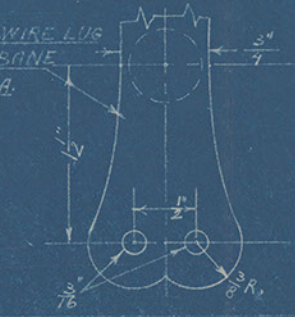
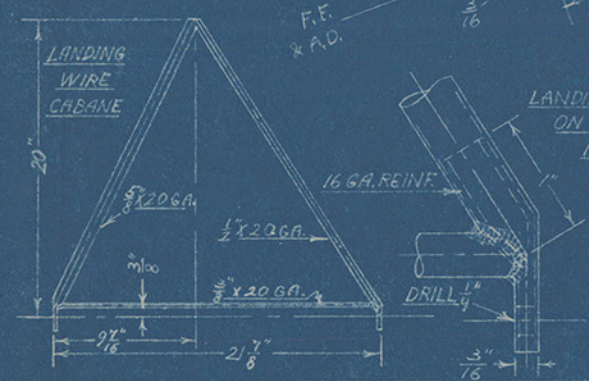
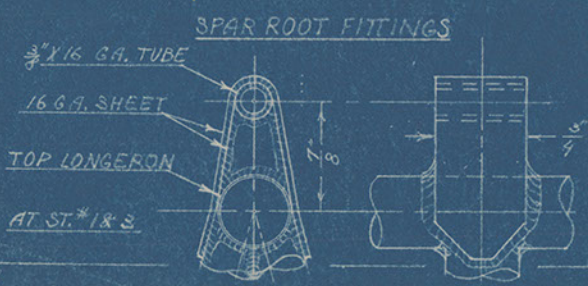
D. BY <i>A. J.</i> 7/21/20	WING ASSEMBLY
SCALE: 1 1/2" = 1'	
DRG. # 9	
LINCOLN, NEBRASKA	"BABY LINCOLN" WITH "LINCOLN-ROCKET" ENGINE



MAT'L: S.A.E. SPEC. 1025 STEEL

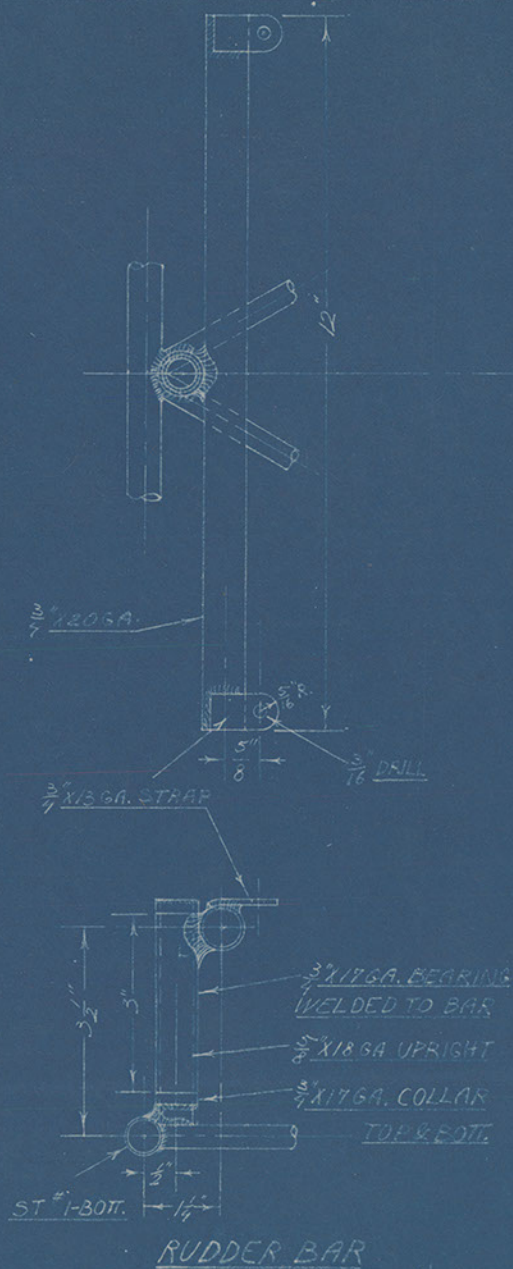
D. BY: J. G. 7/5/30	WING FITTING DETAIL "BABY LINCOLN" WITH "LINCOLN-ROCKET" ENGINE
SCALE: 1/2" = 1' & FULL	
DRG # 10	
LINCOLN, NEBRASKA	

6 REQ. AS SHOWN
 1 REQ. CENTER HOLE 1/4"
 4 REQ. 16 GA. SINGLE END
 DRAG WIRE LUG 3/8" x 1/4" GA STRAP

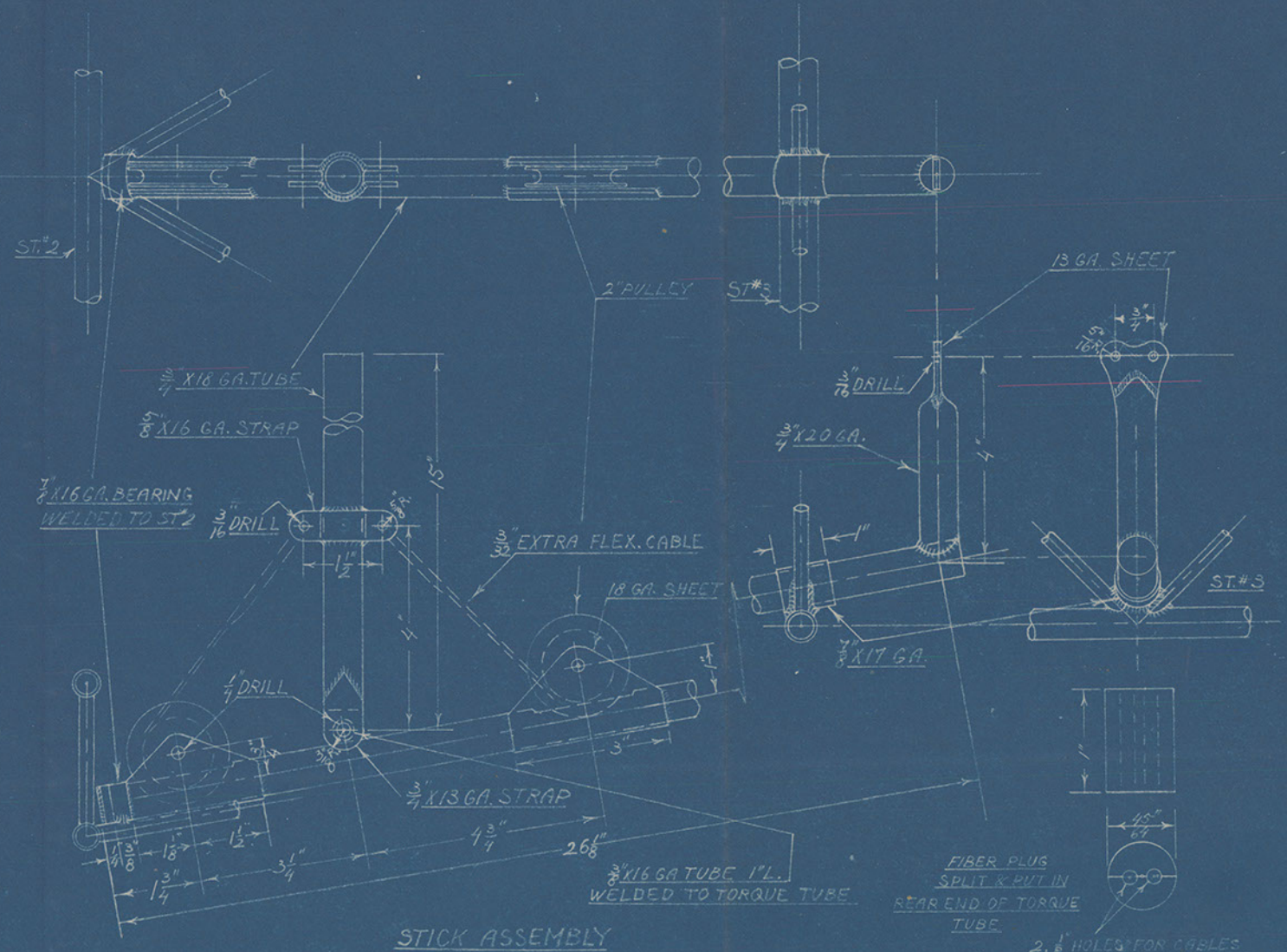




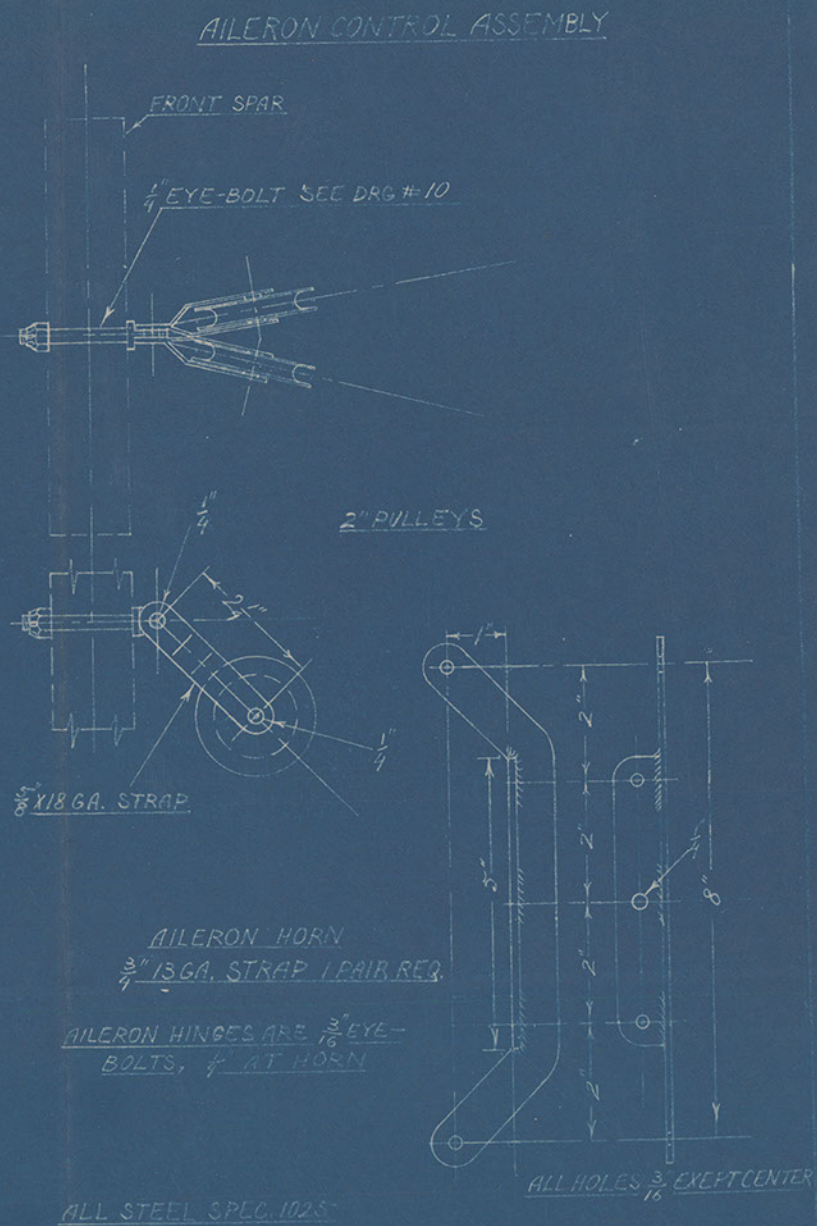
DESIGNED BY	W. J. H. W.	RIB
SCALE	FULL	
DES. NO.	11	"GRAY-LINCOLN" ENGINE
DATE		LINCOLN, NEBRASKA



RUDDER BAR



STICK ASSEMBLY



AILERON CONTROL ASSEMBLY

D. BY J. J. 4/30/30	CONTROLS "BABY-LINCOLN" WITH "LINCOLN-ROCKET" ENGINE
HALF SCALE	
DRG # 12	
LINCOLN, NEBRASKA	